



**7450.0005, 7450.0007, 7450.0009,  
7450.0011, 7450.0013**



SPARE-PART INFORMATION REFRIGERATED COUNTER TOP ¼ GN



ONDERDELEN INFORMATIE GEKOELDE OPZETVITRINE ¼ GN



INFORMATION DE PIÈCES PUIFS FROID ¼ GN

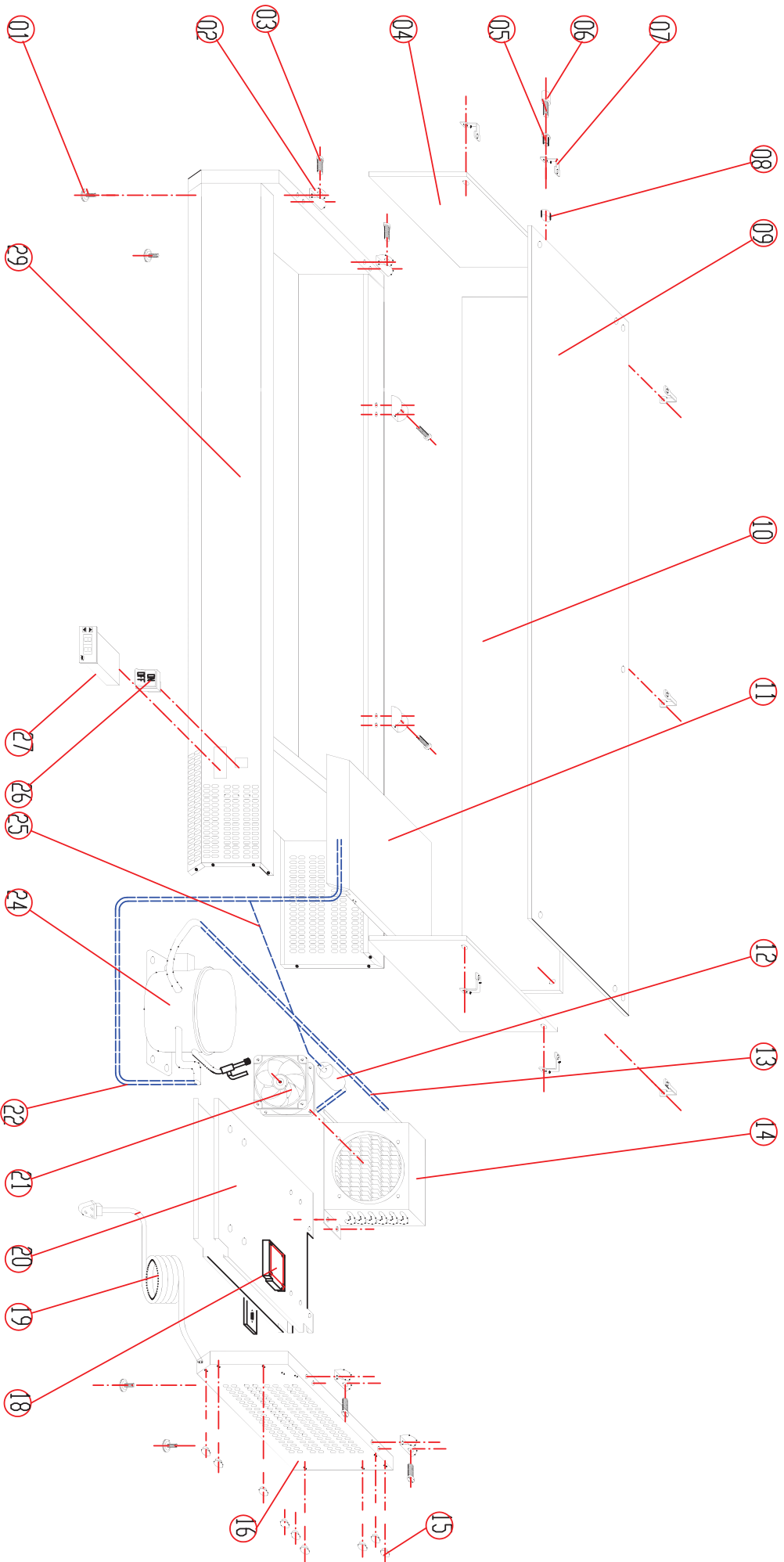


ERZATSTEIL INFORMATION AUFSATZVITRINE ¼ GN

COMBISTEEL CATERING EQUIPMENT  
Laagraven 53  
3439 LL Nieuwegein/ The Netherlands  
T. +31 (0) 30 285 00 90  
F. +31 (0) 30 285 00 95  
E. [info@combisteel.com](mailto:info@combisteel.com)  
W. [www.combisteel.com](http://www.combisteel.com)

**CombiSteel**

CATERING EQUIPMENT



EXPLODE OF VRX1200/330

## Spare Parts list of VRX1200/330

N0.	CODE	NAME	MODEL	QUANTITY	MATERIAL	REMARK
01	S900.13	FEET		4PCS	PLASTIC	
02	VRX.01	GLASS CLIP		6PCS	ALLOYED METAL	
03	VRX.02	GLASS CLIP FIXED BOLT		6PCS	STAINLESS	
04	VRX33.03	SIDE GLASS		2PCS	SAFTY GLASS	
05	VRX.04	BUSHING		14PCS		
06	VRX.05	GLASS FIXED BOLT	M6	14PCS	STAINLESS	
07	VRX.06	GLASS LINKED CLIP		7PCS	STAINLESS	
08	VRX.07	GLASS CLIP FIXED NUT		14PCS	STAINLESS	
09	VRX33/12. 8	TOP GLASS		1PC	SAFTY GLASS	
10	VRX33/12. 9	BACK GLASS		1PC	SAFTY GLASS	
11	VRX.10	UNIT ROOM COVER		1PC	STAINLESS	
12	S900.44	FILTER DRIER	20g	1PC	XH-9	
13	S900.36	DISCHARGE TUBE	Φ6	1PC	COPPER	
14	VRX.11	CONDENSER	1/5HP	1PC	COPPER/AL	
15	S900.03	PLASTIC CAP	Φ13	9PCS	PLASTIC	
16	VRX33.12	SIDE COVER		1PC	STAINLESS	
18	S900.48	JUNCTION BOX		1		
19	S900.47	PLUG	LT312/1.5MM <sup>3</sup> x3G	1PC		
20	VRX33.14	UNIT BOARD		1	ZINCFY STEEL	
21	S900.34	CONDENSER FAN	SA1238A2	1PC		
22	S900.39	SUCTION TUBE		1PC	COPPER	
24	VRX.18	COMPRESSOR	OF789	1PC		
25	VRX.15	CAPILLARY	Φ2.3x0.8x2000	1PC	COPPER	
26	S900.01	MAIN SWITCH	DRH-2415-3	1PC		
27	S900.02	THERMOSTAT	REK33	1PC		
29	VRX33/12.17	BODY		1PC		