

AR30 VL-1



Spare parts manual

Valid from machine number:
30007630

Varimixer

Varimixer A/S
Elementfabrikken 9
DK-2605 Brøndby
Denmark

P: +45 4344 2288
E: info@varimixer.com
www.varimixer.com

DRN: 24030-1302
2022 11 02

EN

SPEED REGULATION.....	3
TRANSMISSION	4
PLANETARY HEAD	6
MACHINE COLUMN.....	8
SAFETY GUARD	10
LIFTING SYSTEM	12
ATTACHMENT DRIVE.....	14
MICROSWITCHES	16
CABLES.....	17
ELECTRIC COMPONENTS.....	18
FRONT PANEL ASSEMBLY.....	20
BOWLS AND MIXING TOOLS	22

ORDERING OF SPARE PARTS:

Sales of spare parts for our mixers, are handled in our sales and service department. When ordering spare parts, the following information must be provided:

- 1. Type of machine.**
- 2. Number of the machine.**
- 3. Article number of the spare part in question. (Order no.)**
- 4. Method of conveyance.**

If one of the above pieces of information is missing, please contact our sales and service department before placing the order, as then we can assist you in finding the correct article number (**order no.**) of the spare part in question.

A few spare parts are not sold alone, in such cases reference is made at the pos.number to the assembly number to be used for ordering. The assembly numbers are shown on the relevant pages.

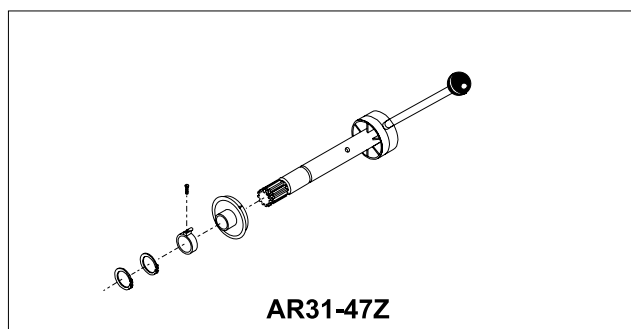
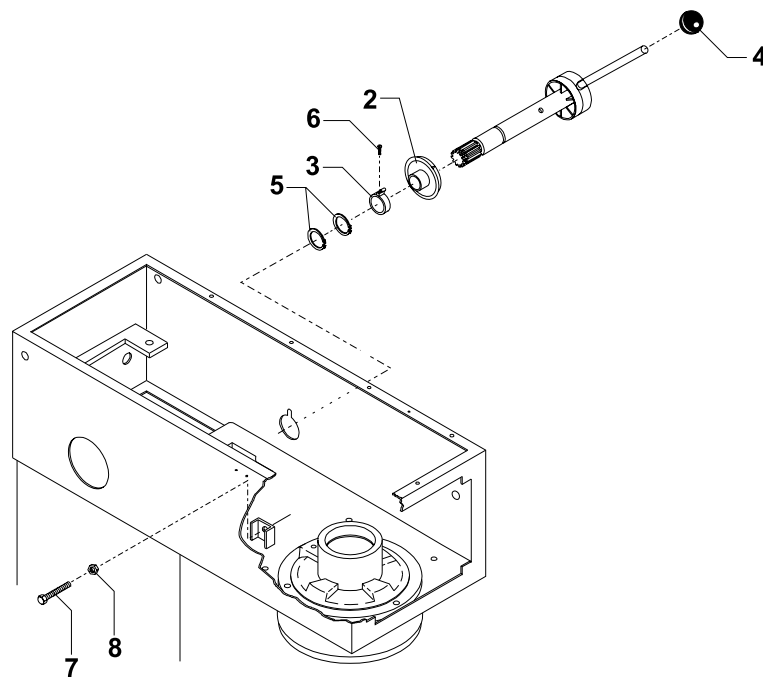
Returning of spare parts is only allowed when agreed with:

Varimixer A/S

FIG NO.	ORDER NO.	DESCRIPTION
---------	-----------	-------------

2	AR30-47.10	Disc with arrow
3	AR30-47.11	Clamp
4	STA3306	Knob
5	STA3414	Circlip
6	STA5247	Screw
7	STA5439	Screw
8	STA5810	Nut

..... AR31-47Z.....Speed selector assembly

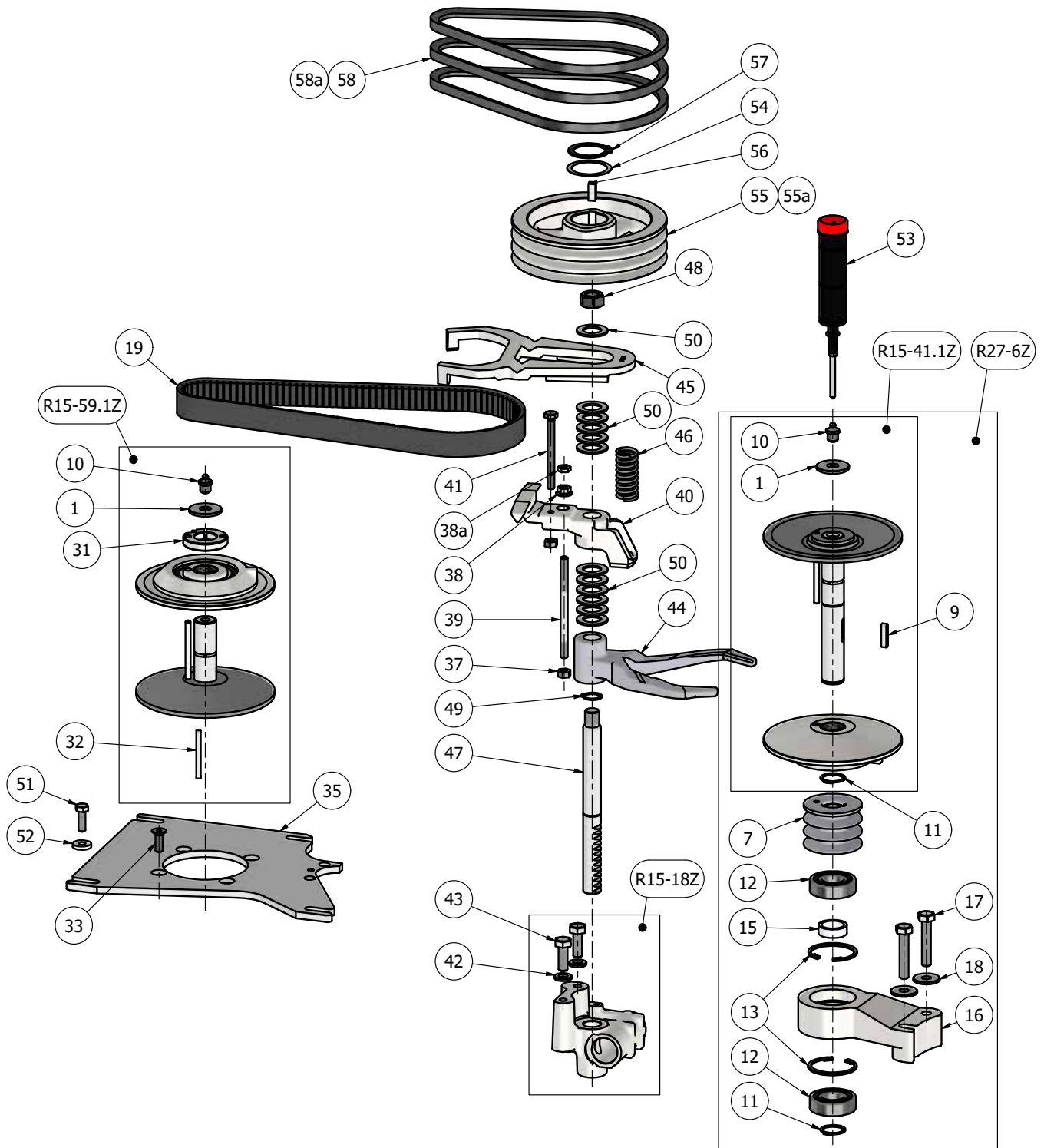


TRANSMISSION

FIG NO.	ORDER NO.	DESCRIPTION
1	STA6018	Washer
7	R27-128	V-belt pulley
9	STA2024	Feather Key
10	STA3220	Grease nipple
11	STA3410	Circlip
12	6205 2RS	Ball bearing
13	STA3514	Circlip
15	R15-143	Distance bushing
16	R30-6	Bearing arm
17	STA5348	Hex cap screw
18	STA6033	Washer
19	R27-91	V-belt
31	R27-227Z	Clamping ring
32	STA2011	Feather Key
33	STA5018	countersunk head screw
35	R60-61.1E	Base for motor
37	STA5810	Hex Nut
38	STA5895	Hex flange nut
38a	STA5812	Hex Nut
39	AR31-305	Stud bolt
40	R20-26.1	Support bracket for belt
41	STA5447	Hex cap screw
42	STA6026	Washer
43	STA5345	Hex cap screw
44	R27-16	Fork for belt tightener, lower
45	R20-19	Fork for belt tightener
46	R20-275	Compression spring
47	R15-46	Toothed rack shaft
48	STA5815	Hex Nut
49	STA3407	Circlip
50	STA6040	Washer
51	STA5433	Hex cap screw
52	STA6034	Washer
53	R15-142	Grease gun
54	STA6043	Shim washer
55	*3) R40-129	V-belt pulley
55a	*4) R40-129A	
56	STA2030	Feather Key
57	STA3425	Circlip
58	*3) R40-90	V-belt
58a	*4) R40-90.1	

..... *3) .. 50 Hz power supply

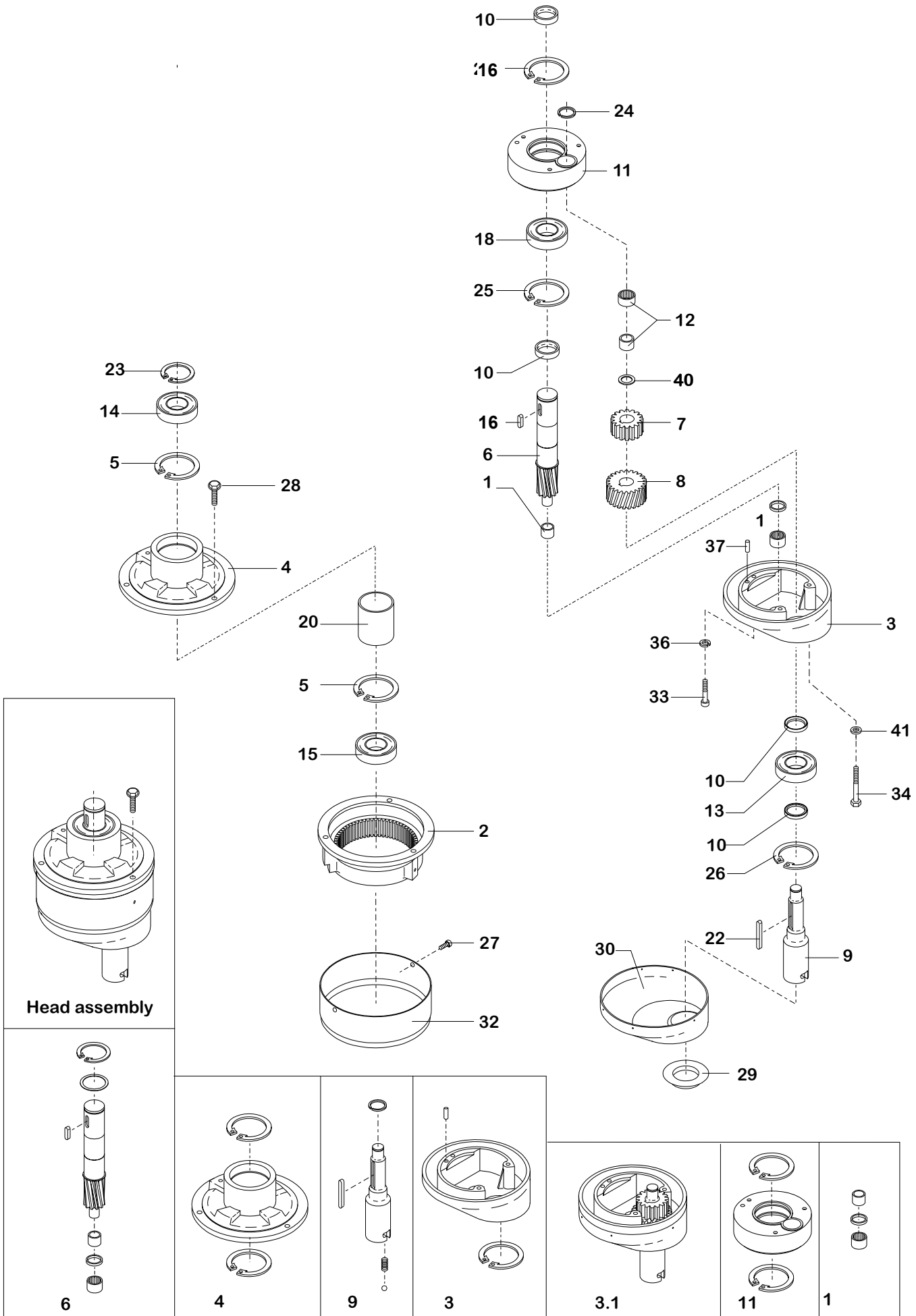
..... *4) .. 60 Hz power supply



- R15-59.1Z Motor pulley, assembly
 R27-6Z Pulley bearing arm, assembly
 R15-41.1Z Pulley assembly
 R15-18Z Bearing bracket, assembly

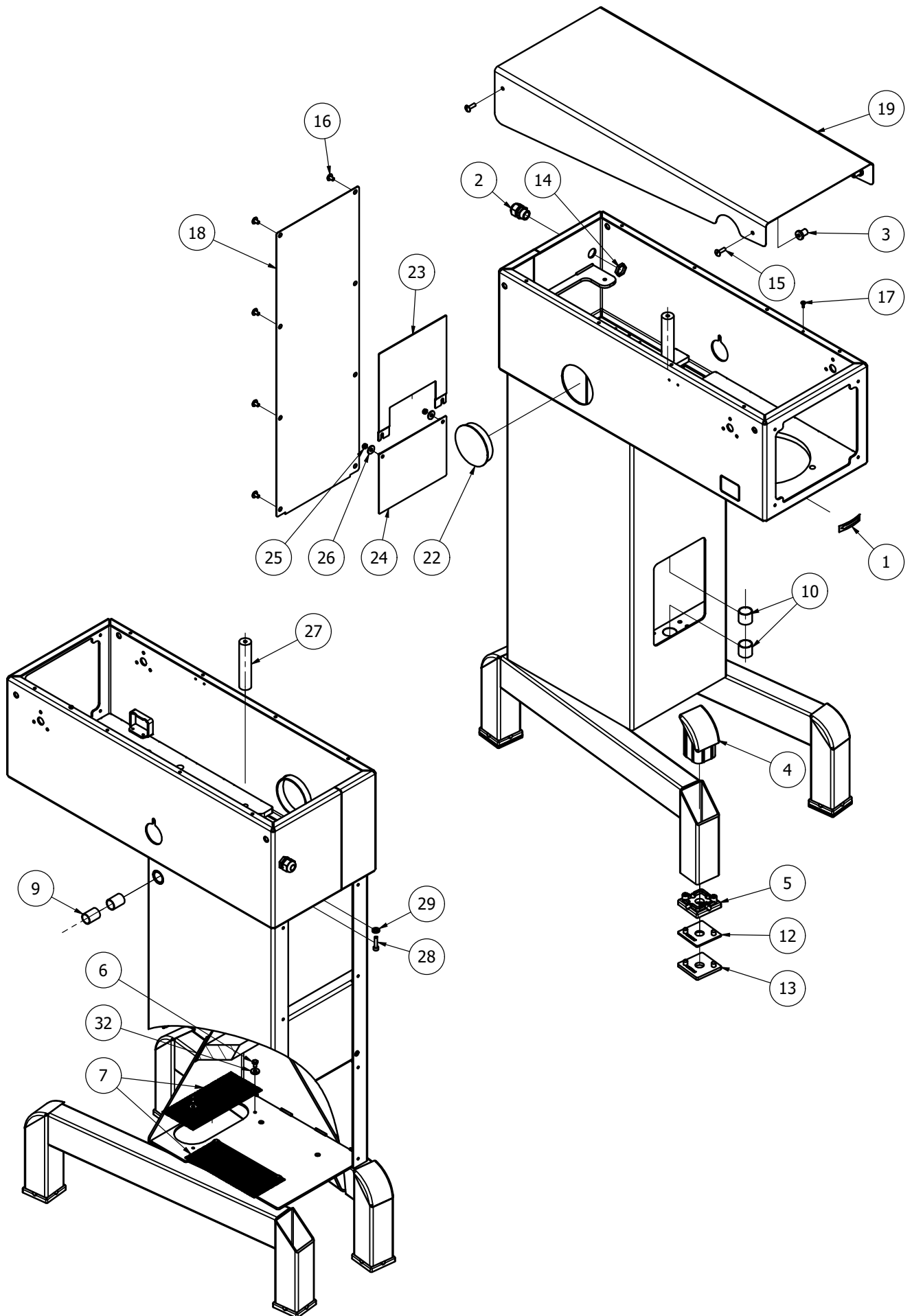
PLANETARY HEAD

FIG NO.	ORDER NO.	DESCRIPTION
	*1)	R30-2.2M Planetary head assembly
	*3)	R30-2.3MR
1		R30-101Z Needle bearing, assembly
2		R30-1 Gear wheel rim
3		R30-2Z Eccentric head, kit
3.1	*1)	R30-2.2Z Eccentric head assembly
4		R40-3Z Main bearing, assembly
5 + 26		STA3526 Circlip
6		R30-30Z Main shaft, assembly
7		R30-31 Rim pinion
8		R30-32 Rim pinion, lower
9	*1)	R30-33Z Bayonet shaft, kit
10		R30-37 Distance piece
11		R30-36Z Eccentric disc mounted
12		R30-96 Needle bearing
13		R30-97 Ball bearing
14		R30-98 Ball bearing
15		R30-99 Ball bearing
16		R40-34 Distance piece
18		R30-100 Ball bearing
20		R40-141 Distance tube
21		STA2030 Key
22		STA2038 Key
23		STA3425 Circlip
24		STA3472 Circlip
25		STA3520 Circlip
26		STA3522 Circlip
27		STA5263 Screw
28		STA5333 Screw
29		W40-209 Seal ring
30		W40-272 Cap, planetary head
32	*1)	AR30-162H Plastic cap, white
	*3)	AR30-162G Plastic cap, grey
33		STA5645 Screw
34		STA5363 Screw
35		STA6043 Washer
36		STA6055 Lock washer
37		STA6460 Grooved pin
40		STA6046 Washer
41		STA6030 Washer
	*1)	Standard version
	*3)	Stainless steel frame version



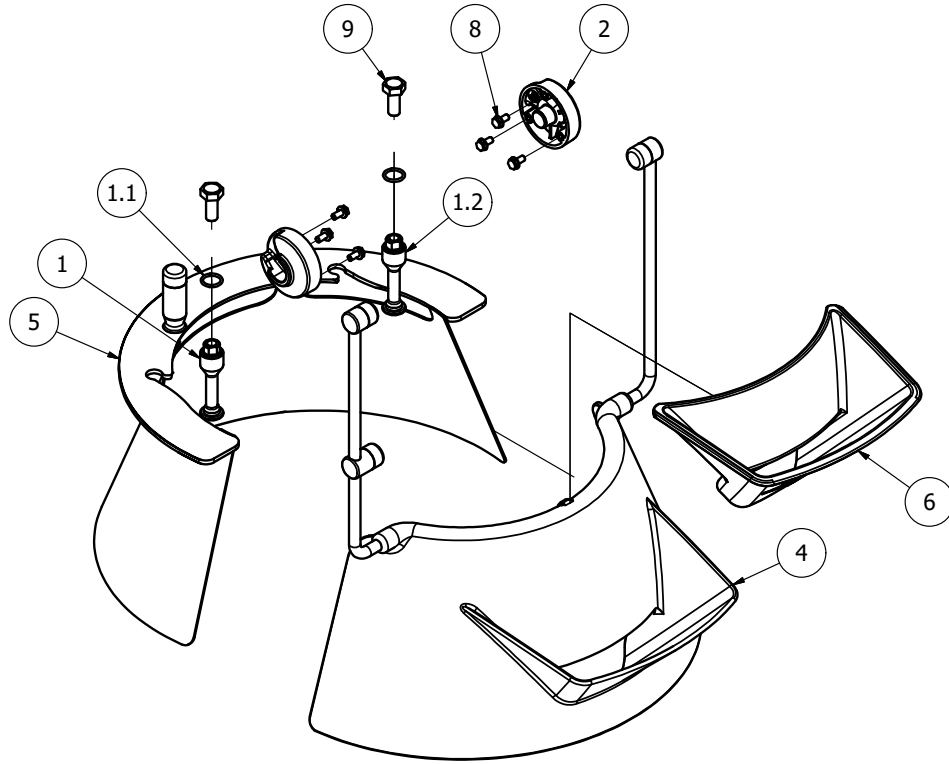
MACHINE COLUMN

FIG NO.	ORDER NO.	DESCRIPTION
1	R15-245	Arrow sign
2	STA3002	Cable gland
3	STA6580	Threaded bushing
4	AR30-212	Blanking plug
5	AR30-213	Levelling feet
6	STA5045	Screw
7	AR31-22.180	Grate
9	STA2515	Bearing bushing
10	STA2520	Bearing bushing
12	AR30-214.3	Adjustment plate, 3 mm
13	AR30-214.6	Adjustment plate, 6 mm
14	STA3014	Cable gland nut
15	STA5017	Screw
16	STA5080	Screw
17	STA5232	Self tapping Screw
18	AR31-22.17R	Cover plate
19	AR31P-21P	Top cover
22	STA6510	Plug button
23	AR31-270	Cover plate, upper
24	AR31-271M	Cover plate, lower
25	STA5834	Lock Nut
26	STA6027	Washer
27	AR31-148E	Stay
28	STA5625	Screw
29	STA6056	Lock washer
32	STA6165	Washer



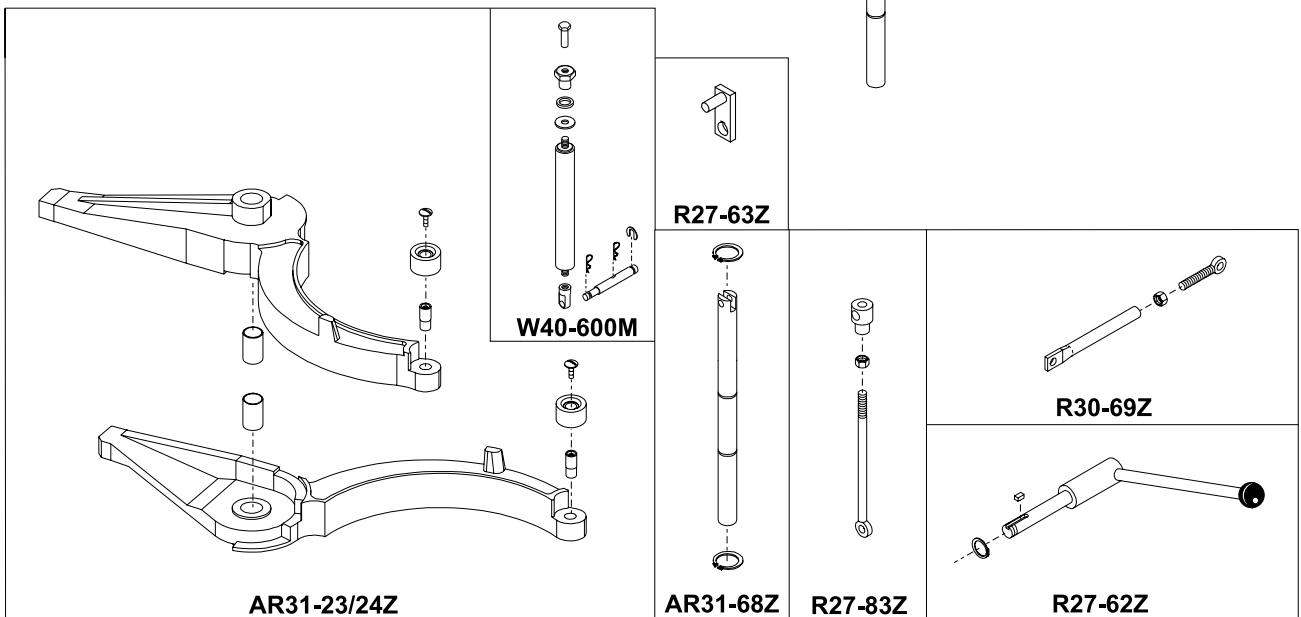
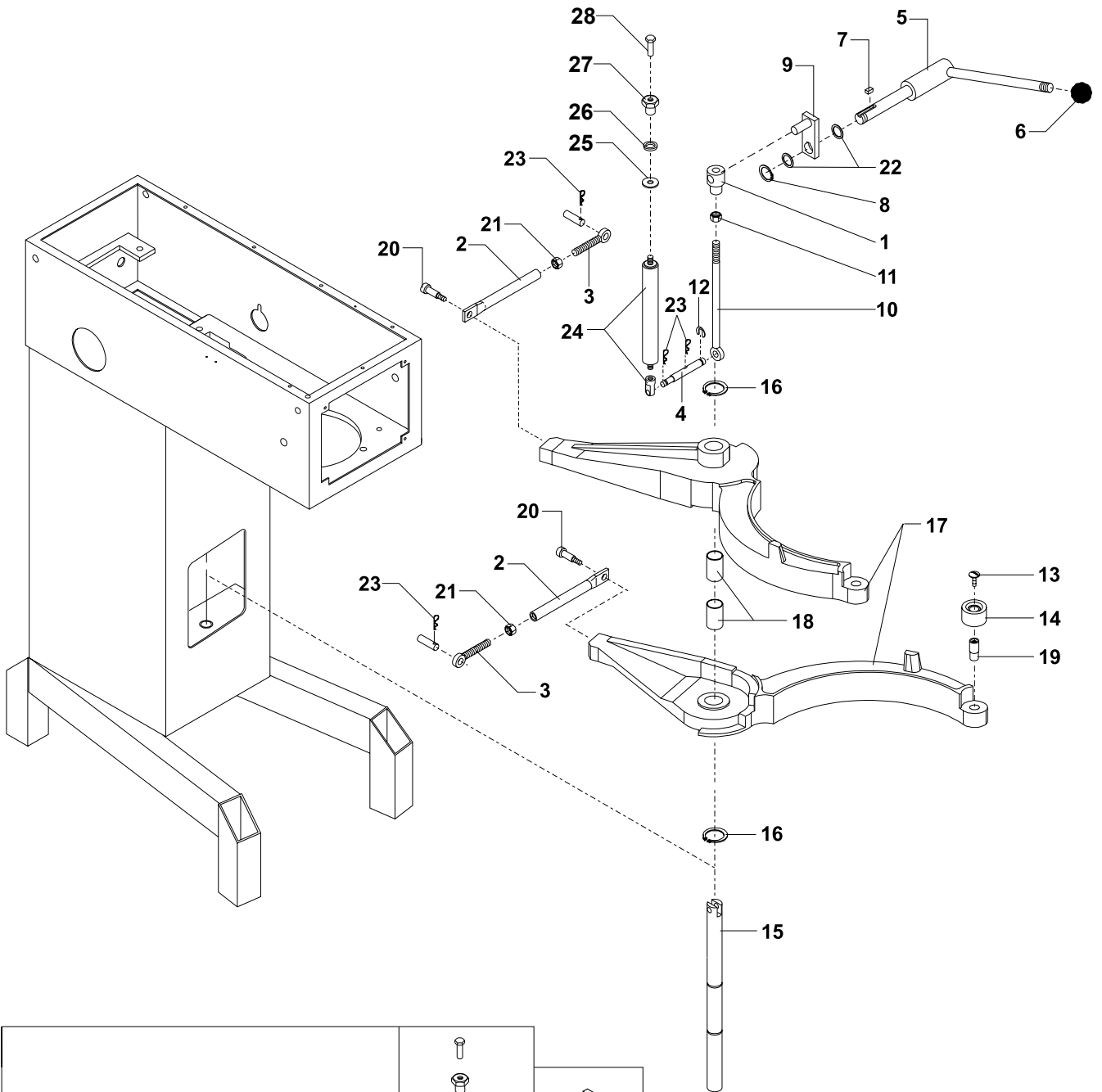
SAFETY GUARD

FIG NO.	ORDER NO.	DESCRIPTION
1	56AR31-102.1	Mounting shaft
1.1	STA3143	O-ring
2	56AR31-107M	Shield hinge
4	56AR31-21M	Safety guard removable
5	56AR31-22	Safety guard fixed
6	56AR31-280	Filling tray Grey
8	STA5047	Hex flange bolt
9	STA5332	Hex flange bolt



LIFTING SYSTEM

FIG NO.	ORDER NO.	DESCRIPTION
1	AR40-65M	Lifting nut
2 + 3 + 21	R30-69Z	Tensile rod
4	W40-603E	Pin
5	R27-62Z	Lifting lever, assembly
6	STA3308	Ball knob, black
7	STA2020	Key
8	STA3407	Circlip
9	R27-63Z	Crank shaft complete
10	R27-83Z	Lifting bolt
11	STA5827	Nut
12	STA3580	Circlip
13	STA5088	Screw
14	AR31-128	Roll for bowl clamping
15	AR31-68Z	Bowl arm, guide rod
16	STA3467	Circlip
17	AR31-23/24Z	Bowl arm set, colour black**
**	For other colours, please contact Varimixer A/S	
18	STA2522	Bearing bushing
19	AR31-127	Roller shaft
20	STA5690	Shoulder screw
22	STA6044	Washer
23	STA6205	Cotter pin
24	W40-600M	Oil damper, assembly
25	STA6028	Washer
26	STA3126	O-ring
27	W40-605E	Nut for damper
28	STA5322	Screw



ATTACHMENT DRIVE

FIG NO.	ORDER NO.	DESCRIPTION
1	R15-5	Bearing hub
2	R20-9	Worm wheel
3	R15-10	Gear case
4	R15-11	Gear case cover
5	R20-49	Worm shaft
6	R20-52Z	Gear shaft assembly
7	R15-50Z	Attachment drive shaft assembly
8	STA2032	Key
9	R20-104	Ball bearing
10	R20-107	Oil seal
11	R20-300	Gasket
12	R20-300Z	Gasket kit
13	R20-301	Gasket
14	STA2007	Key
15	STA2011	Key
16	STA3410	Circlip
17	STA5018	Screw
18	6005 2RS	Ball bearing
19	STA5433	Screw
20	STA5908	Seal washer
21	STA6020	Washer
23 + 29	STA6056	Lock washer
24	R15-211	Rubber ring
25	R15-215	End cover
26	R15-8M0	Engagement hub, white
27	STA5322	Screw
28	STA5561	Finger screw
29	R20-249	Label, "Greased for life"
30	STA6316	Pin

..... Identification of motor, see page 18.

31 ..Drive unit, cable included

..... **Motor R40-85.1, 1,1 kW**

..... 07040-1130

..... 07040-1130R. stainless steel frame version

32 ..Drive unit with attachment Drive, cable included

..... **Motor R40-85.1**

..... 07030-1140 ... 3F 1,1kW

..... 07030-1140R. 3F 1,1kW, stainless steel frame version

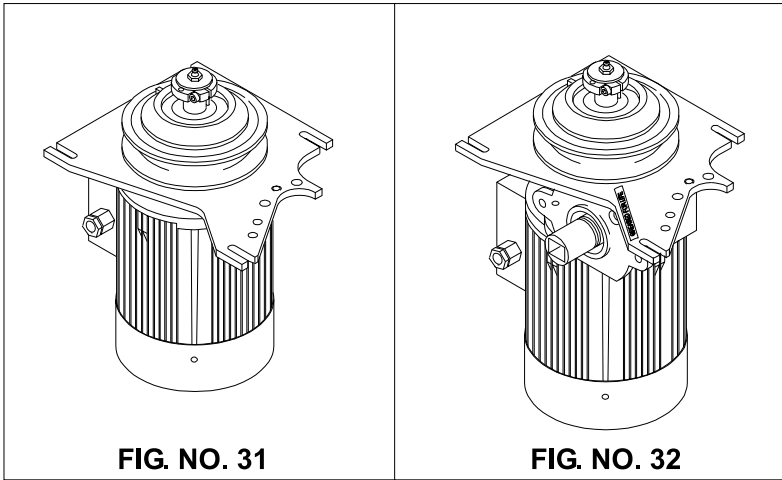
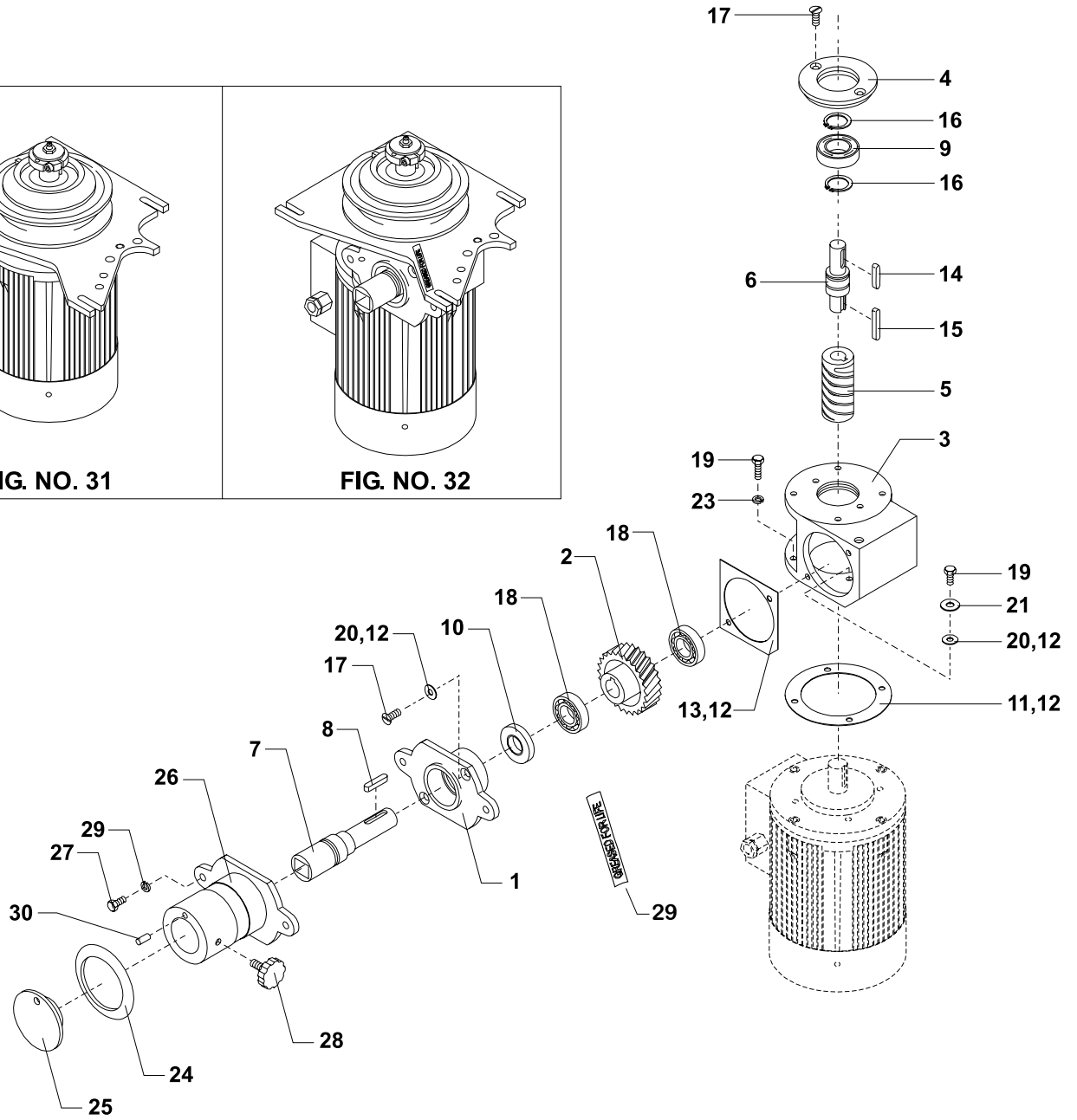


FIG. NO. 31

FIG. NO. 32



<p>R15-8Z</p>	<p>R30-10.5Z</p>	<p>R30-10.5M</p>	<p>R20-300Z</p>	<p>R15-50Z R20-52Z</p>
<p>AR30-10Z</p>		<p>R30-10.5M</p>	<p>R20-300Z</p>	<p>R20-52Z</p>

MICROSWITCHES

FIG NO.	ORDER NO.	DESCRIPTION
1	56CR10-111M	Safety Switch
2	STA5320	Hex cap screw
3	STA5837	Lock Nut
4	STA5721	Hex cap screw

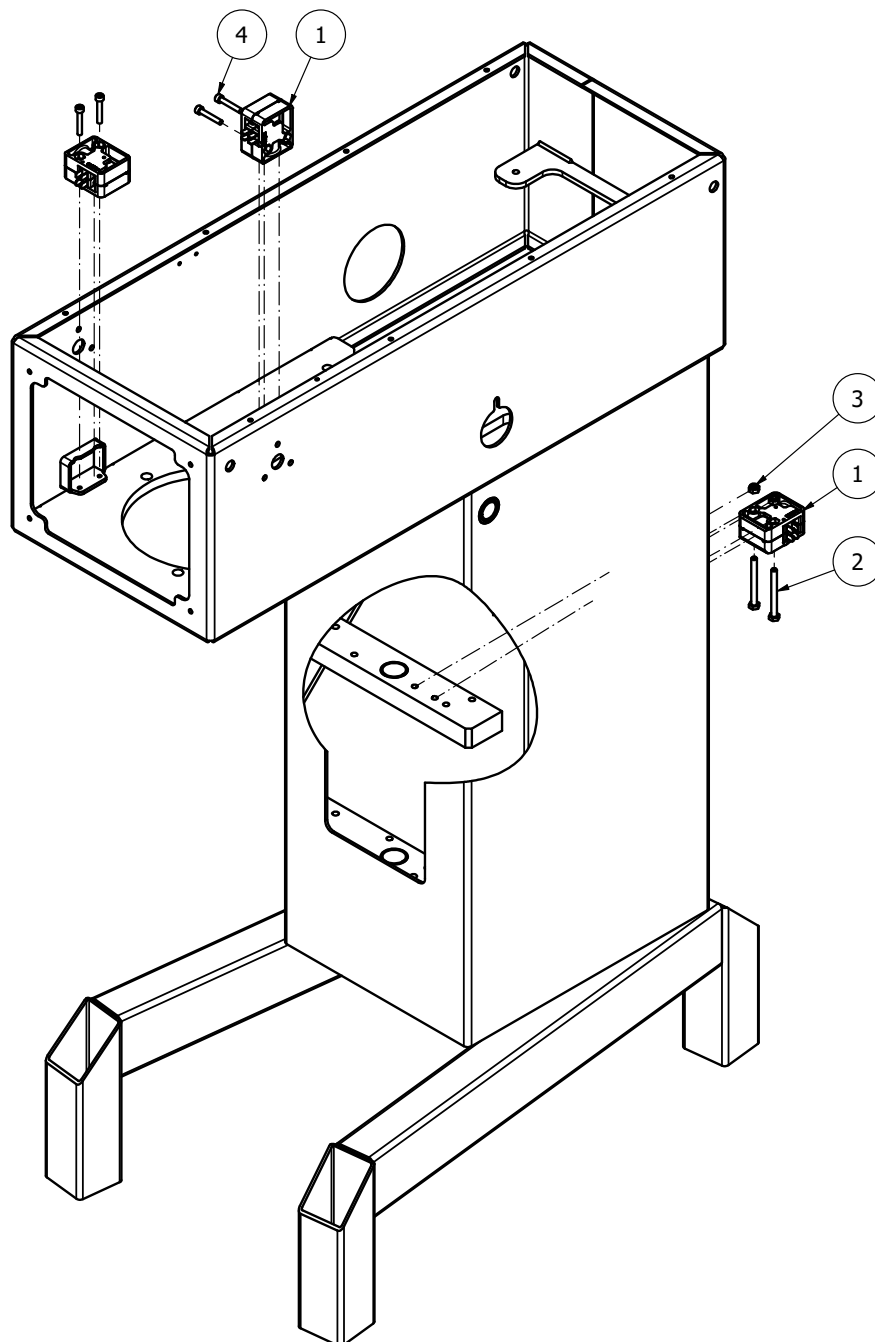
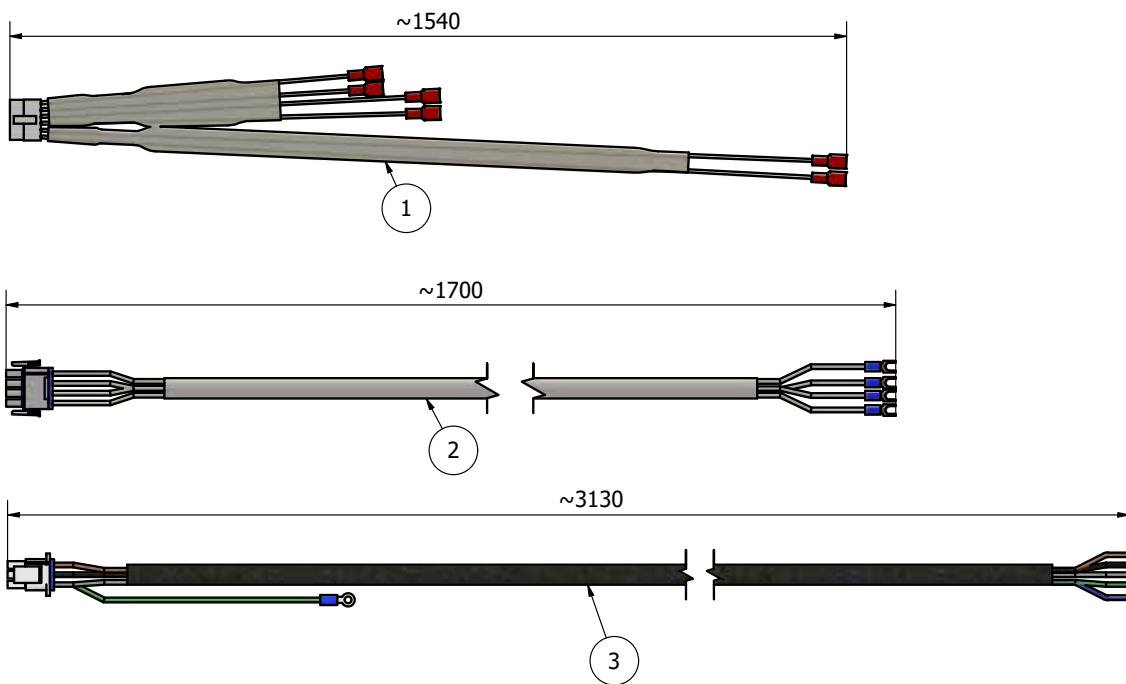


FIG NO.	ORDER NO.	DESCRIPTION
1	AR31-194.19M	Cable, safety switches
2	AR31-194.62M	Motor supply cable
3	AR31-194.53M	Power supply cable, with neutral
	AR31-194.56M	Power supply cable, without neutral



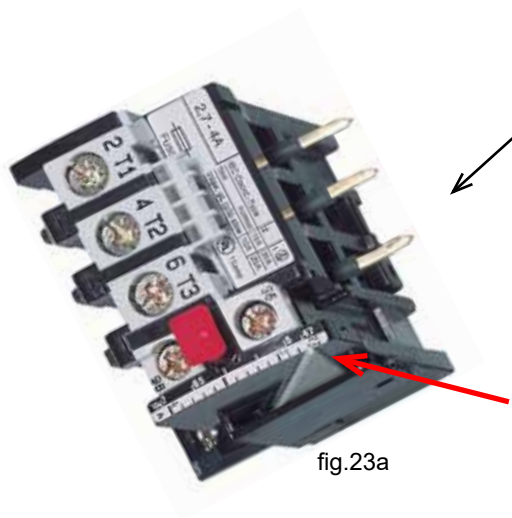
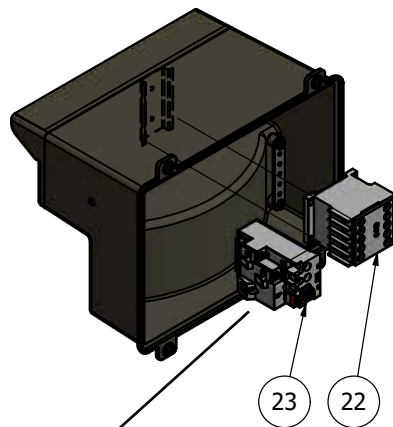
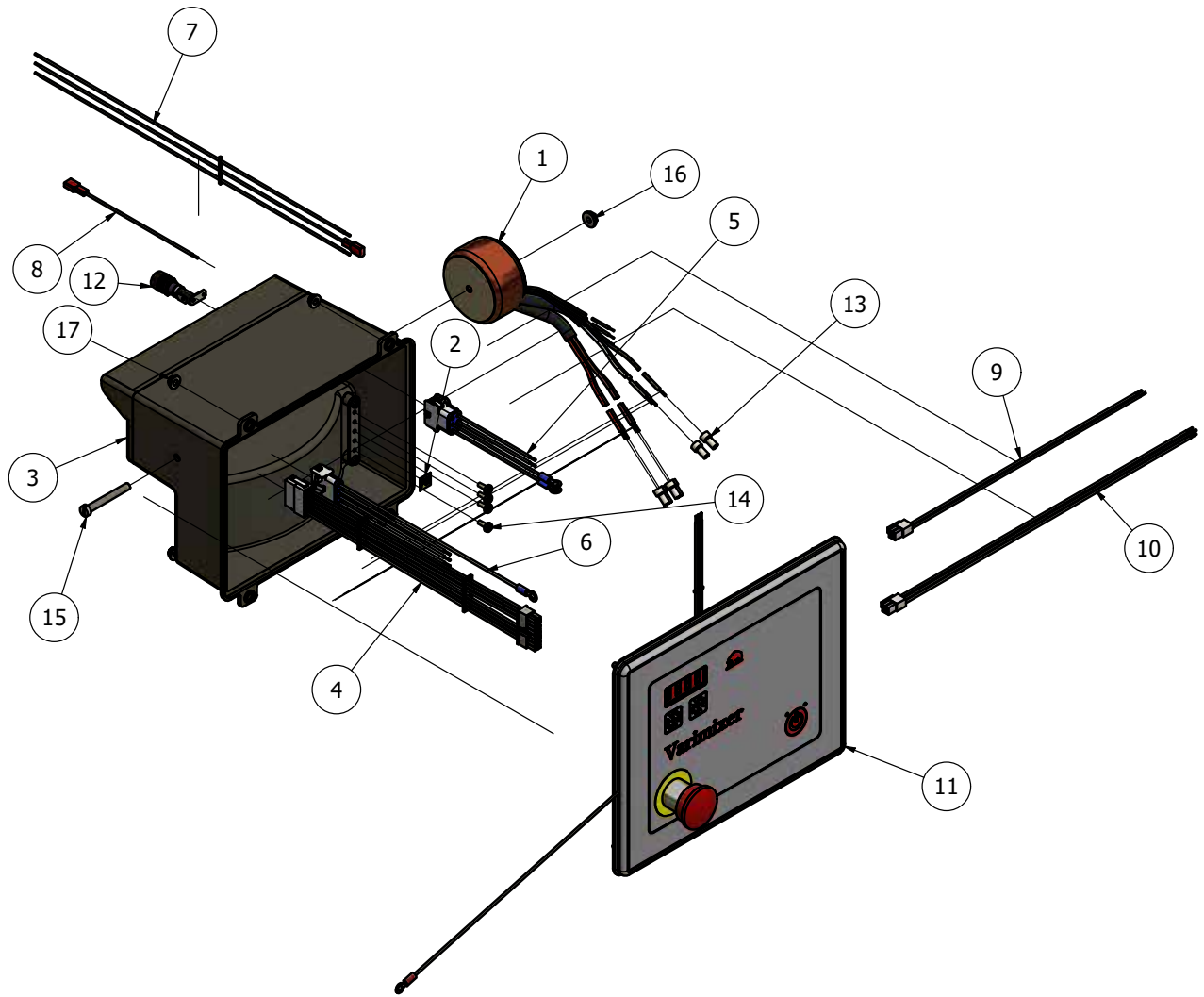
ELECTRIC COMPONENTS

FIG NO.	ORDER NO.	DESCRIPTION
1	*2)	AR10E-430 Isolating transformer
2		AR30-453.1 Physical earth label
3	*1)	AR31-152.1M Enclosure assembly
	*2)	AR31-152.3M
4		AR31-194.18M Safety cable
5	*1)	AR31-194.54M Power supply cable
	*2)	AR31-194.57M
6		AR31-194.63M Motor cable
7		AR31-194.80M Fuse cable
8		AR31-194.81M Fuse cable
9		AR31-194.84M Signal cable
10		AR31-194.85M Signal cable
11		AR31-530.21M Front panel assembly
12		08030-0804 Fuse holder with fuse
12.1		R20E-418.2 Fuse
13	*2)	STA3046 Crimp connector
14		STA5232 Self tapping Screw
15	*2)	STA5250 Screw
16	*2)	STA5896 Hex flange nut
17		STA5897 Hex flange nut

..... *1) .. Without isolating transformer, standard

..... *2) .. With isolating transformer, >380V without neutral

Frequency [Hz]	Voltage [V]	Motor [Item no.]	Power [kW]	Current [A]	Connection	Contactor, [fig.22]	Thermal Overload Relay [fig.23]	Overload relay setting [fig.23a] [A]
50	3x230	R40-85.1	1,1	5,0	Δ	AR31-88.104	AR31-88.203	6,3
	3x380-415			2,9	Y		AR31-88.201	3,6
60	3x480			2,6				



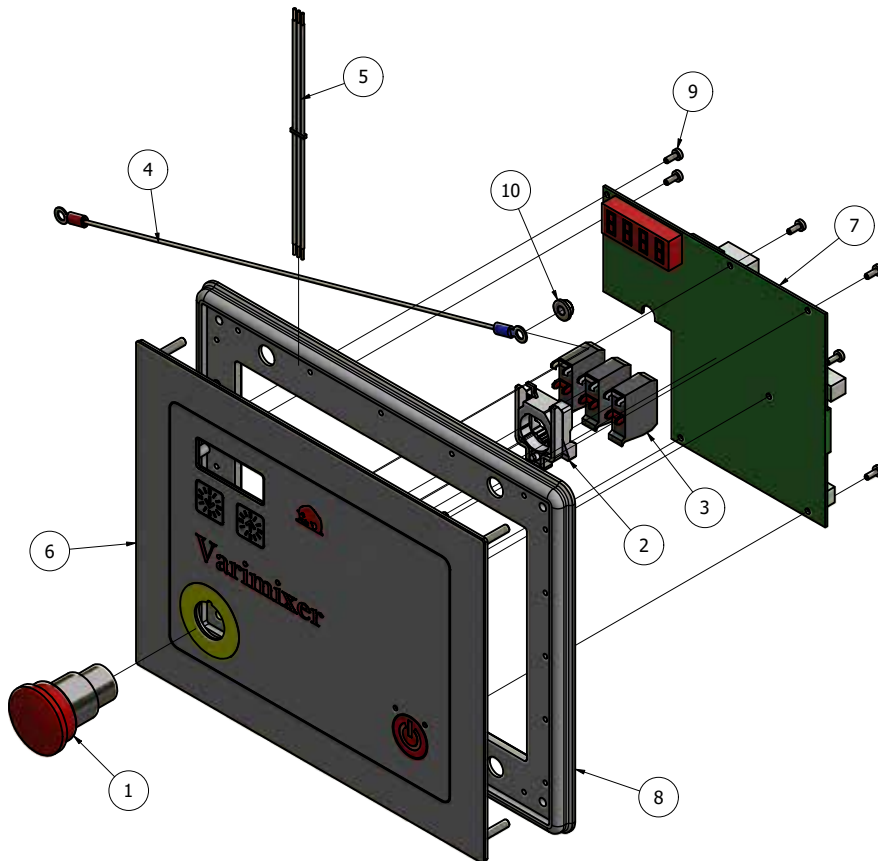
Setting see table page 18

fig.23a

FRONT PANEL ASSEMBLY

FIG NO.	ORDER NO.	DESCRIPTION
1	AR31-174.35.....	Switch emergency stop
2	AR31-174.36.....	Switch mounting Collar
3	AR31-174.37.....	Switch contact block
4	AR31-194.41M.....	Grounding cable
5	AR31-194.82M.....	Supply cable
6	AR31-530.3.....	Front panel
7	AR31-532.10.....	Control board
8	AR31-562.....	Gasket
9	STA5762	Pan head screw
10	STA5897	Hex flange nut

AR31-530.21M



BOWLS AND MIXING TOOLS

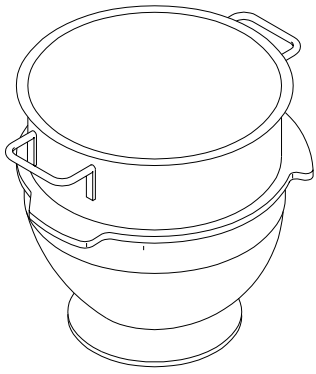
FIG NO.	ORDER NO.	DESCRIPTION
1	RN30-75M	A Bowl
1	RN30-75AM	B Bowl
2	RN30-78M	A Hook
2	R27-78AM	B Hook
3	RN30-27.2M	A Flat beater
3	R27-27A2M	B Flat beater
4	R27-28AM	B Stirring whip
4	RN30-28M	A Stirring whip
4	RN30-28MS	A Whip, reinforced
4	R30-28MT	A Whip with thinner wires
6	14R30A	B Wing whip
6	14RN30	A Wing whip
7	39RN30	A Powder mixer
8 **	42RN30	A Scraper with Blade (PA) and holder
8	42RN30A	B Scraper with Blade (PA) and holder
8	42RN30AT	B Scraper with Blade (PTFE) and holder
8	42RN30T	A Scraper with Blade (PTFE) and holder
9	42NR30A-202T	B Scraper with Blade (PTFE)
9	42RN30-202	A Scraper with Blade (PA)
9	42RN30-202T	A Scraper with Blade (PTFE)
9	42RN30A-202	B Scraper with Blade (PA)
10	42R40-105	Scraper holder
11 **	42RN30-204T	A Blade (PTFE) for scraper
11 **	42RN30-204	A Blade (PA) for scraper
11 **	42RN20-204T	B Blade (PTFE) for scraper
11	42RN20A-204	B Blade (PA) for scraper
12	STA5652	Screw
13	STA6029	Washer
14	48R20Z	Rack for mixing tools
15	22AR30	A Bowl truck
15	22AR30A	A Bowl truck
16	22R276	Bowl truck Handle
17	22R30-41	Bowl Truck Frame
18	22R140.1-9W	B Spacer
18	22R140.1-8W	A Spacer
19	STA5642	Socket head screw
20	22R30-520	Castor wheel
21	STA5608	Hex socket set screw
22	STA5675	Slotted set screw

..... All materials Stainless steel, unless otherwise specified

..... ** Adapted by mounting

..... A Full size bowl

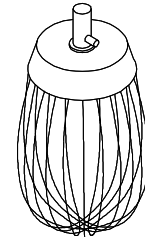
..... B Half size bowl



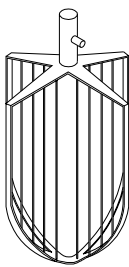
1



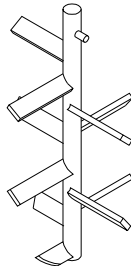
2



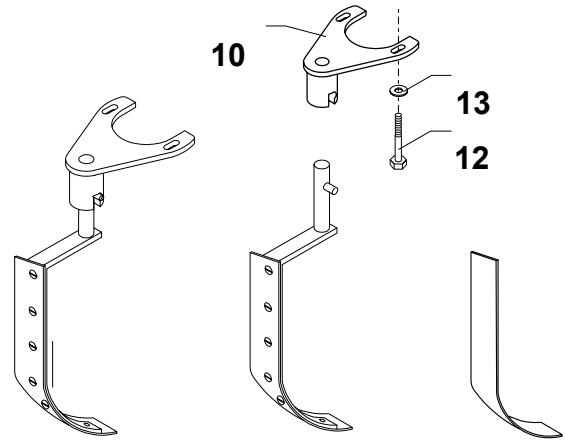
4



6



7

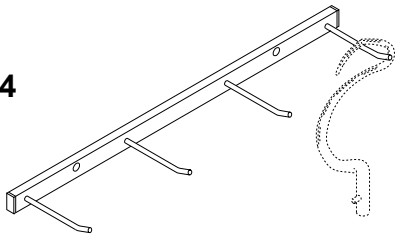


8

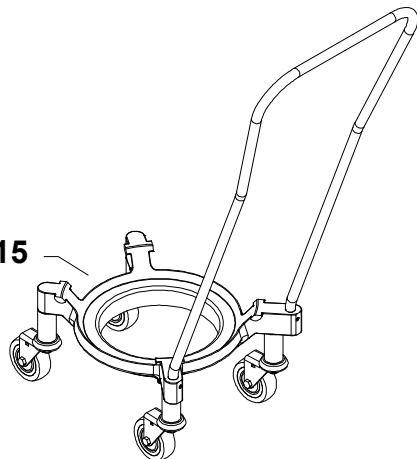
9

11

14



15



17

16

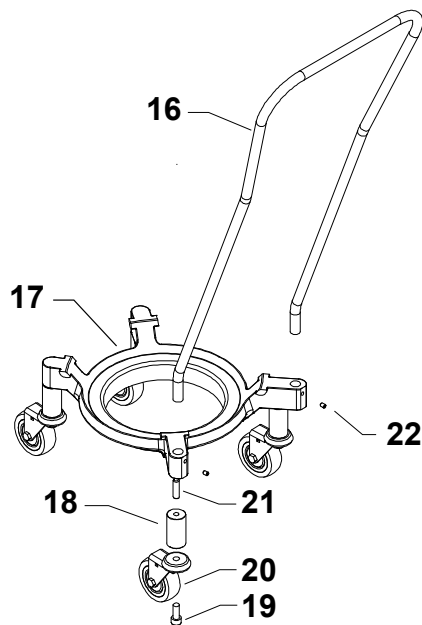
22

18

21

20

19





Varimixer

Varimixer A/S
Elementfabrikken 9
DK-2605 Brøndby
P: +45 4344 2288
E: info@varimixer.com
www.varimixer.com